

**FLOW
MUST
GO ON**

INNOVATIVE MATERIAL HANDING TECHNOLOGY



Decades of extensive material handling expertise

1986
FOUNDED

10 000
DELIVERED
SOLUTIONS

80
DESTINATION
COUNTRIES



Laitex Oy

**FAMILY-OWNED,
ESTABLISHED IN 1986**

**LOCATIONS:
LAPPEENRANTA, FINLAND
HELSINKI, FINLAND**

**LOCAL REPRESENTATIVES:
FRANCE, PORTUGAL, SPAIN and
POLAND**

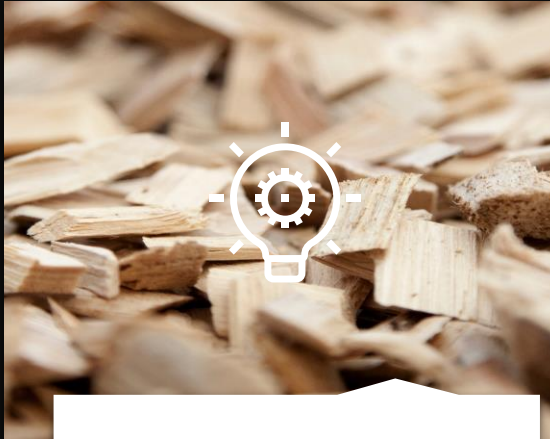
REVENUE 28 M€*
PROFITABLE & GROWING

*) Estimate 2023

~100 EMPLOYEES
**(>30% IN ENGINEERING
DEPARTMENT)**

CERTIFIED
ISO 9001 (QUALITY SYSTEM),
ISO 45001 (HEALTH & SAFETY)
ISO 3834-2 (WELDING QUALITY)

MARKET SEGMENTS



Power & heat



**Circular economy
& environment**



**Metals, minerals &
mining**



Pulp & Paper

Offerings



Power & Heat

- Fuel Yards
- Fuel Feeding
- Bottom Ash Handling
- Sand Recycling
- Fly Ash Handling
- Additive Feeding
- Air Quality Control

Circular Economy & Environment

- Pyrolysis Plants
- Biorefineries
- Lignin & biocoal handling
- Activated Carbon Plants
- Waste Water Treatment



Mining, Minerals & Metals

- Concentrator Plants
- Tailings Plants
- Metals refining
- Industrial Minerals & Chemicals processing
- WHB

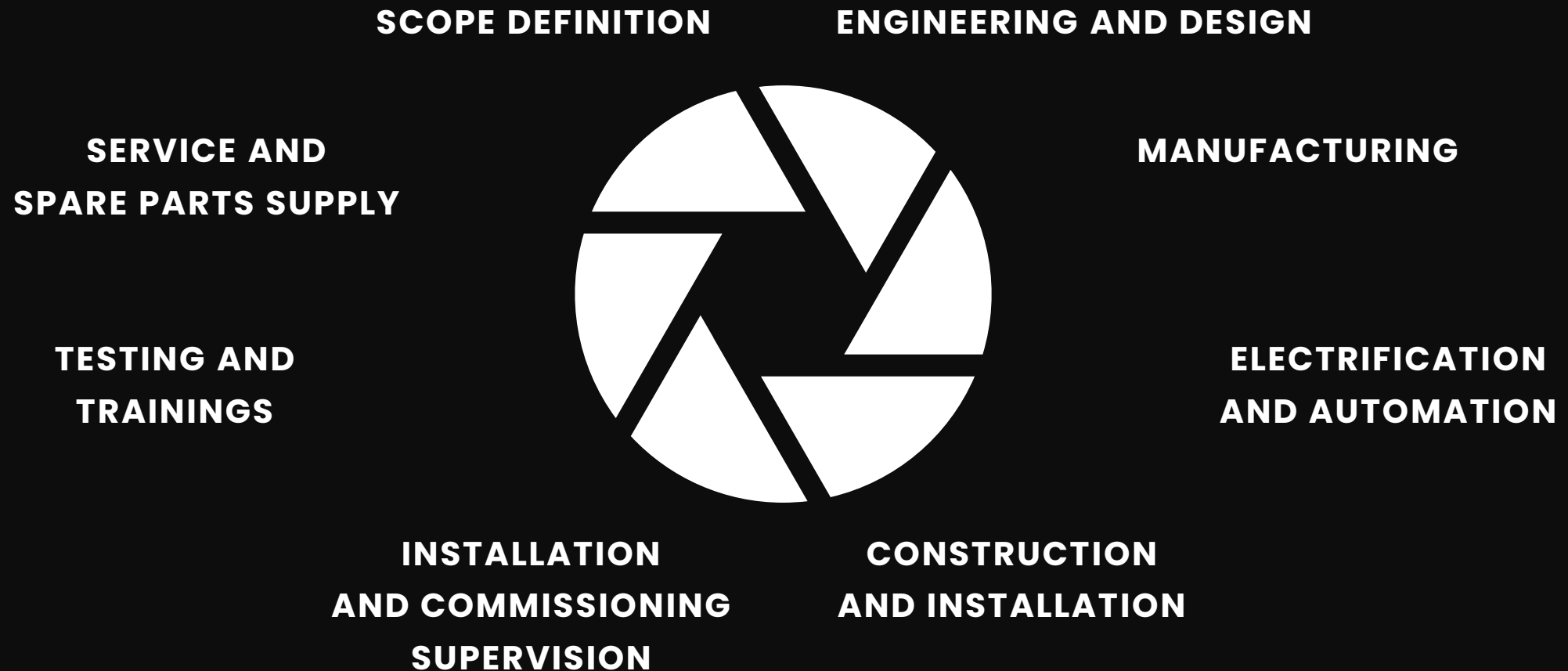


Pulp & Paper

- Wood processing
- Cooking
- Recovery Boilers
- Recausticizing
- Lime Kiln



Our services





SPARE PARTS



FIELD SERVICES



REFURBISHMENTS

Service offering



**MODERNIZATIONS
AND UPGRADES**



ADVISORY

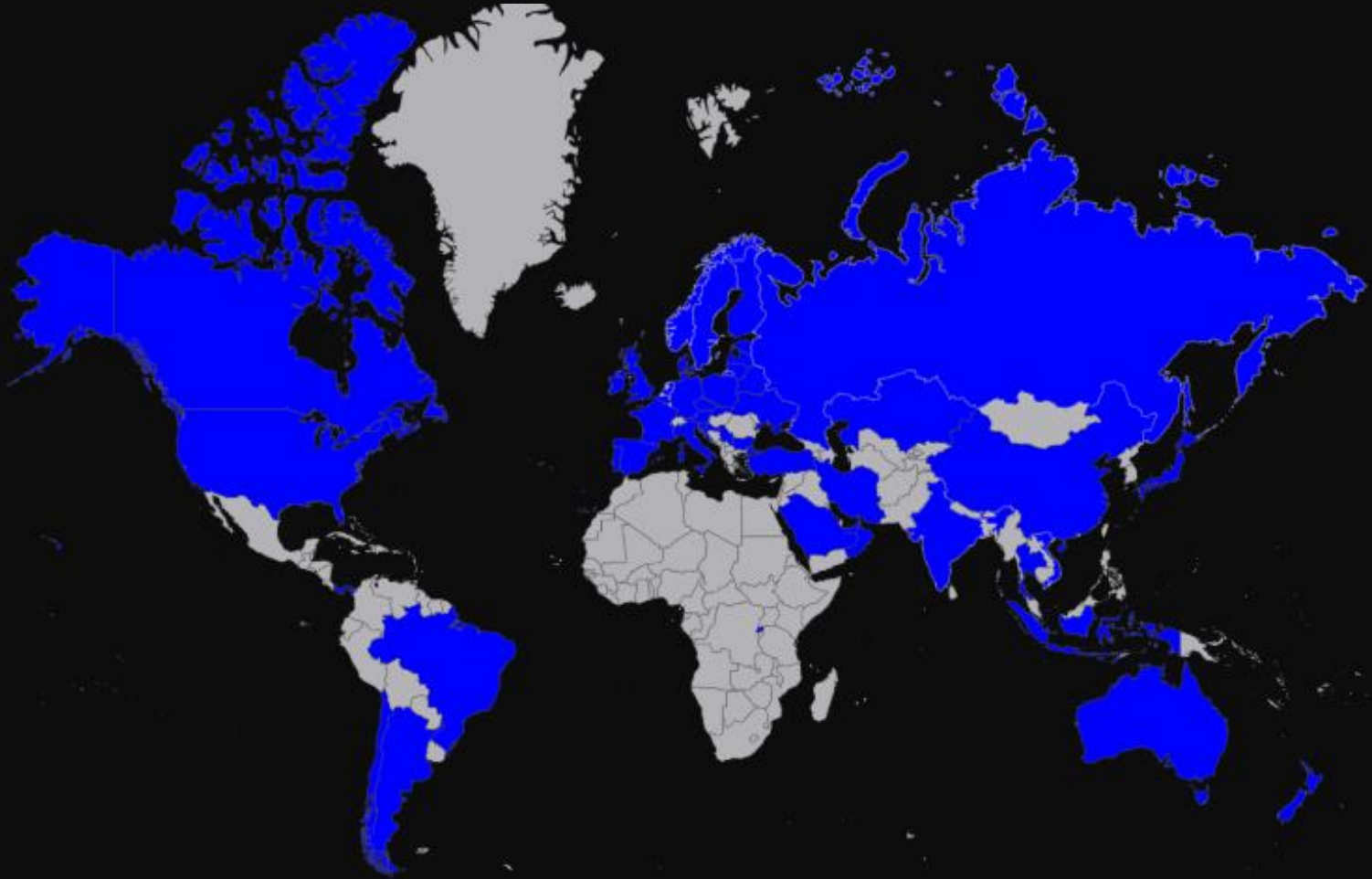


IOT

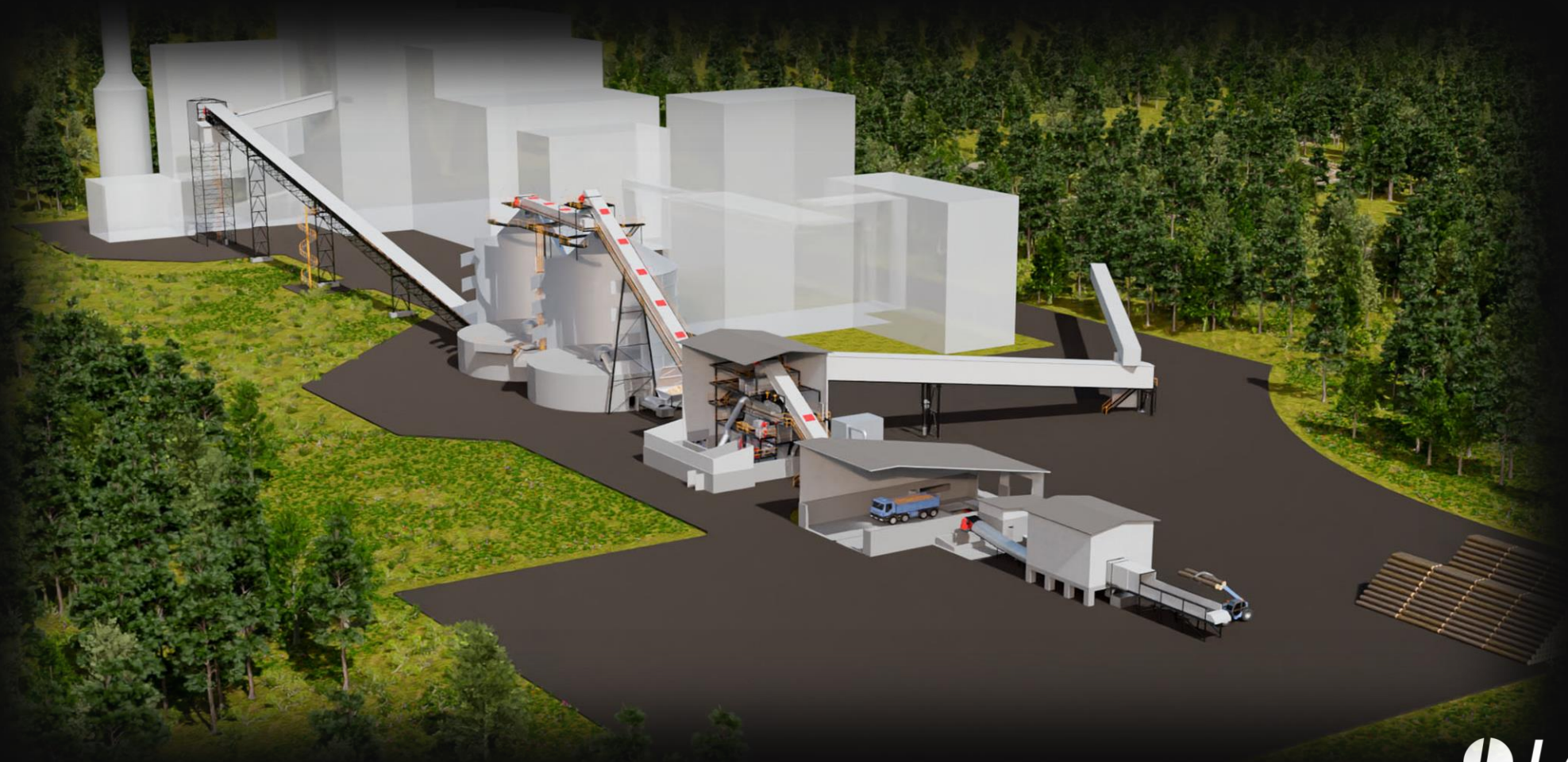


AGREEMENTS

References delivered more than 80 countries

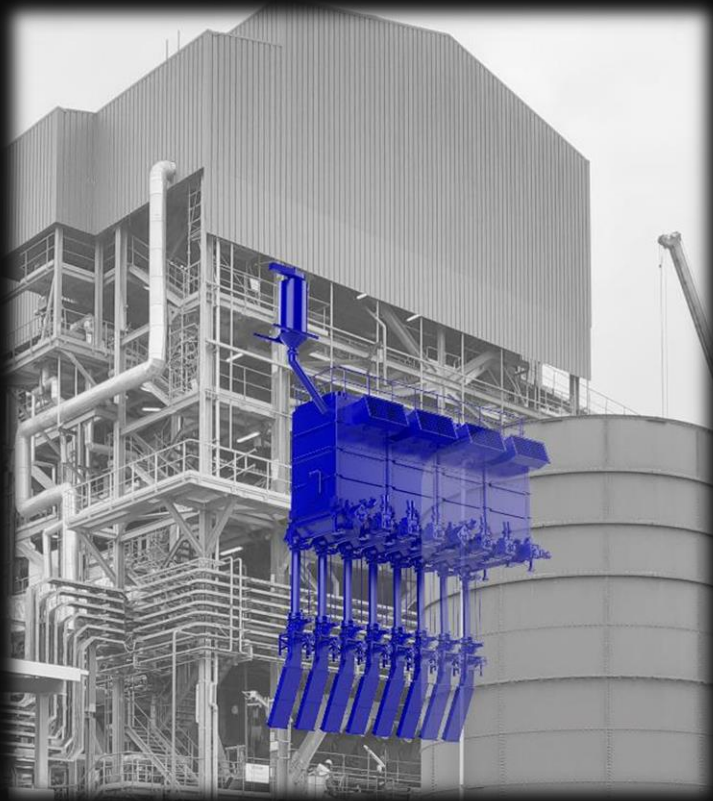


SELECTED REFERENCES



CASE

Le Moule, Guadeloupe



Year of delivery:

2019

Plant:

Le Moule - Unit 3: 35MWe

Fuel:

Biopellets

Scope:

Fuel feeding system

Coal to biomass conversion

100% locally produced biomass as a fuel

CO2 emissions – 87 %

CASE

Bolu, Turkey

Year of delivery:

2021

Plant:

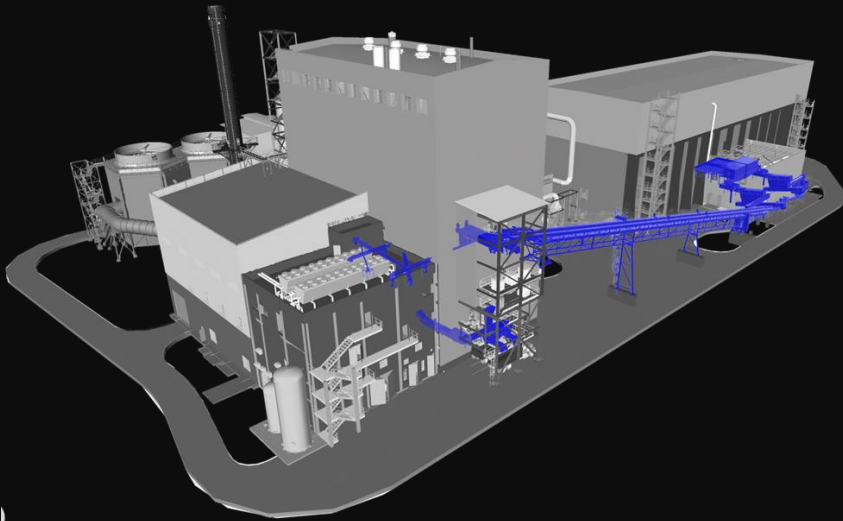
35MWe

Fuel:

Poultry litter

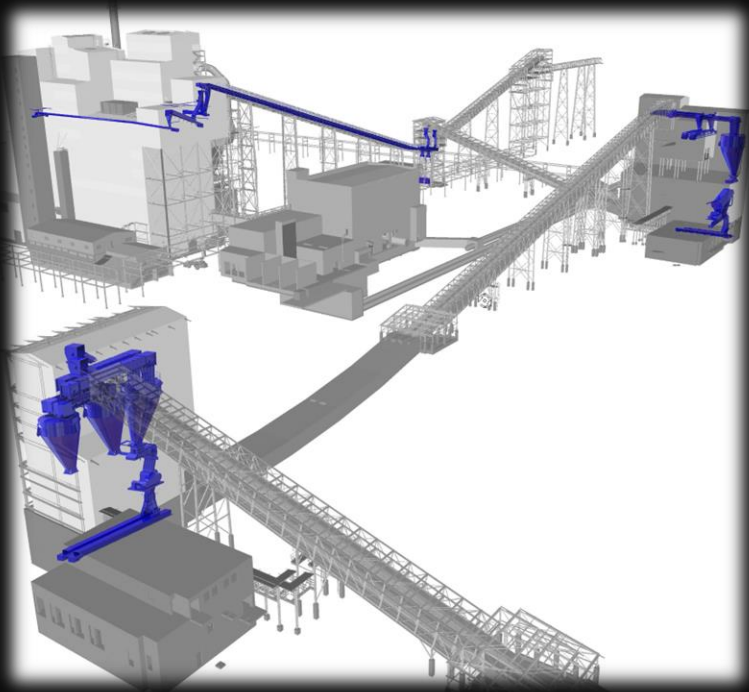
Scope:

- Fuel receiving bunkers
- Screening and metal separation
- Fuel transportation to boiler silo
- Bottom and fly ash handling



CASE

Ida-Virumaa, Estonia



Year of delivery:

2021-2024

Plant:

Shale oil 240,000 tpa

Scope:

- EPS
- Process Equipment for oil shale processing
- Subsystems: Fogging systems
- EIA: Turnkey process EIA
- Site services: Installation and commissioning supervision

CASE

Lieksa, Finland



Year of delivery:

2020

Plant:

Bio-oil refinery

Scope:

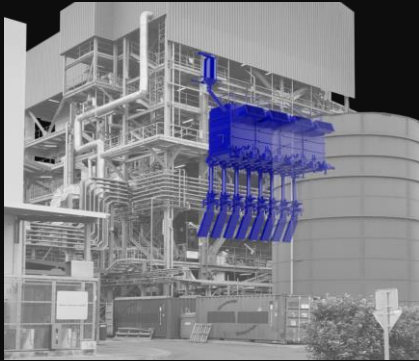
- Feedstock handling:
 - Receiving
 - Screening and sorting
 - Storing and feeding to dryer
- Electrification, Automation, and Instrumentation
- Erection and Commissioning

2019
Le Moule
Guadeloupe

2022
ABR1
Reunion

2022
ABR2
Reunion

2023
ALGB
Reunion



Plant:

Le Moule

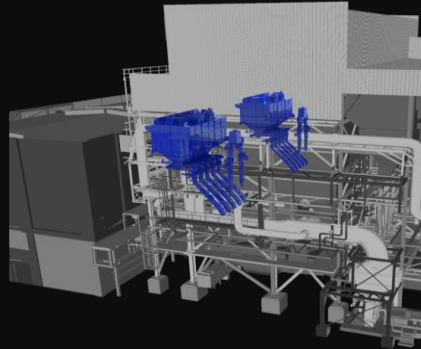
Unit 3: 35MWe

Fuel:

Biopellets

Scope:

- Fuel feeding system
- Coal to biomass conversion



Plant:

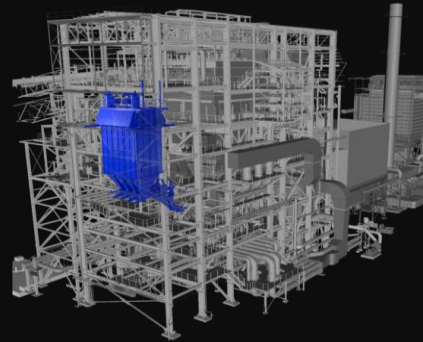
Bois Rouge

60MWe (2 x 30MWe)

Fuel: **Biopellets &
Local Biomass**

Scope:

- Fuel feeding system
- Coal to biomass conversion



Plant:

Bois Rouge

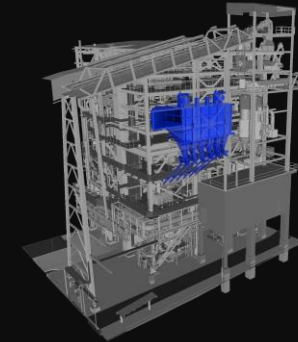
48MWe

Fuel:

Biopellets

Scope:

- Fuel feeding system
- Coal to biomass conversion



Plant:

Le Gol

Unit 2: 58MWe

Fuel:

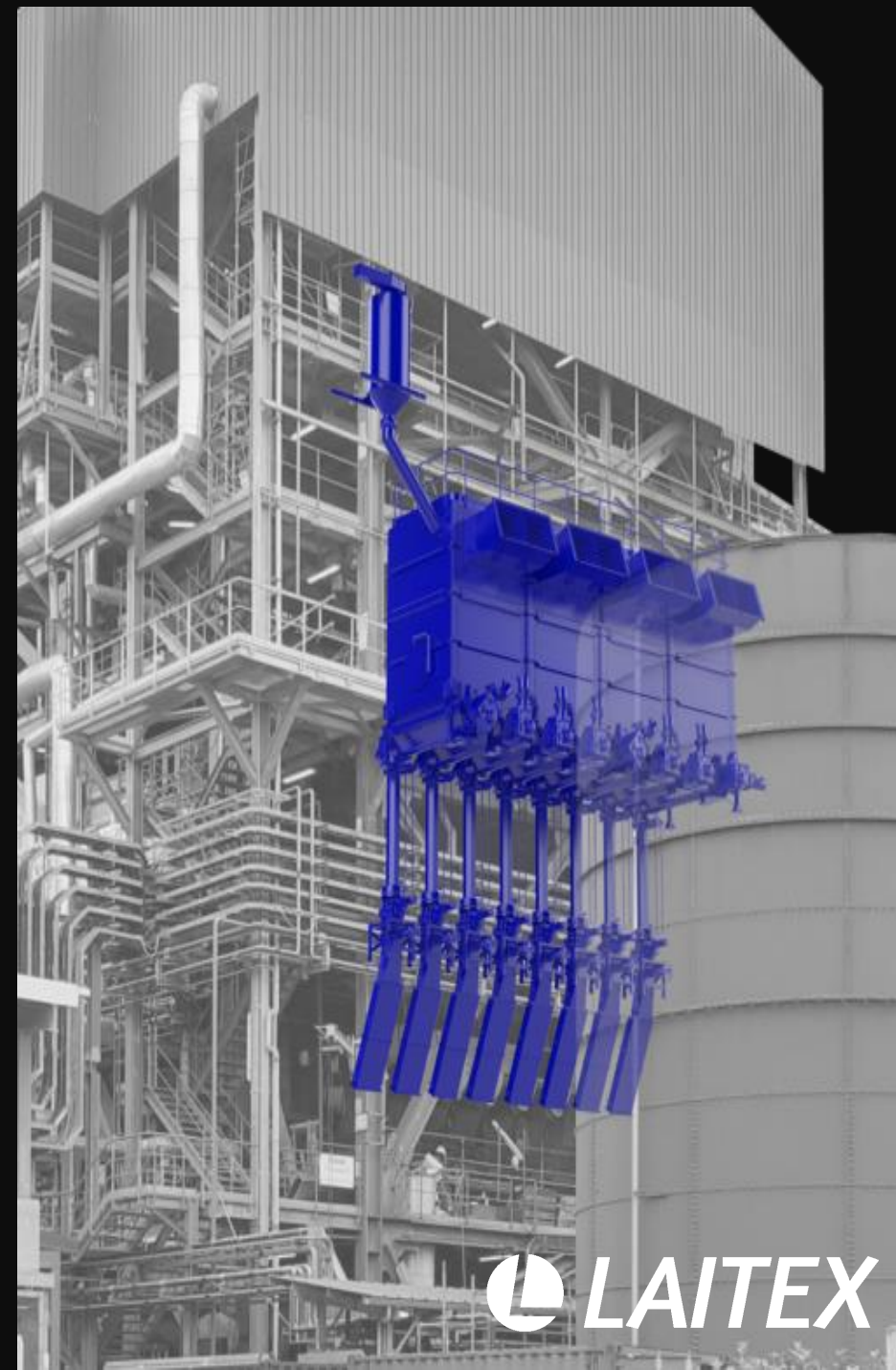
Biopellets

Scope:

- Fuel feeding system
- Coal to biomass conversion

Requirements in conversion projects

- 🕒 Projects are always executed in an existing building
- 🕒 The lack of space causes challenges in layout, necessary maintenance facilities, and erection planning
- 🕒 Pellet is easily explosive and strongly related to ATEX requirements
- 🕒 Exotic locations have special requirements
- 🕒 **Each project is highly customized even if it may look very similar from the outside**



FLOW MUST GO ON

INNOVATIVE MATERIAL HANDLING TECHNOLOGY

LAITEX.FI

